



**Engineering progress
Enhancing lives**

Clean, cutting- edge design

RAUKANTEX edgeband materials
Standard stock range

www.rehau.com/raukantex



Engineering progress

What drives the furniture industry? The continuous search for the perfect appearance, combined with the need for uncompromising reliability. Two standards which are deeply engrained in REHAU's DNA. This is the reason why we always scrutinise our existing products in order to turn something already good into something even better and simultaneously set new trends.

In doing so, we always remain focused on the quality benchmark that has turned us into what we are today. In brief: Engineering progress. Enhancing lives.



Enhancing lives

Enabling exceptional design.

When you opt for REHAU, you are choosing over 50 years of experience in interior finishing. Elegant, high-quality furniture components are our passion. This is the reason why we develop products and services that enable you to create unique favourite places.



Utilisation of the right products is the foundation of magnificent interior design. We develop each one of our solutions with a clear goal in mind: an optimum combination of quality and aesthetics, as well as smart product features combined with field-tested processing options.



**We may already
know each other –
Even if you do not
yet know.**

Because there's a relatively high chance that you've already processed one of our RAUKANTEX edgebands.

Polymer edgebands continue to represent our core expertise in the furniture department. They symbolise the values our partners love about us: reliability, flexibility and a passion for innovation.

These fundamental values explain why joiners and interior designers all over the world rely on REHAU and RAUKANTEX.



High-quality edgebands "made in Germany". "Made-for-Europe" edgeband service:

To be able to also meet growing demand in future whilst creating an even more varied portfolio, REHAU is expanding their service and logistics centre in Visbek, Lower Saxony.



The expansion concept includes a fully automated high-rack warehouse, the digital linking of all processes, state-of-the-art transport systems and new service areas. In doing so, we are further significantly increasing our capacity for the company's edgeband product range, whilst the investment clearly demonstrates its commitment to Germany as a business location. "Made in Germany" is both a quality pledge to customers and a commitment to our roots.

Allow REHAU be your warehouse

Our new service and logistics centre provides a European edgeband service, allowing us to support our partners and customers even more efficiently. We offer our dealers a full-service package with 200,000 edgebands in over 2,000 colours and decorative designs as stock items, along with full fabrication, edgeband services and the appropriate distribution logistics. With REHAU as a partner, distributors can entirely dispense with their own stockkeeping.

Next door and quickly on tour.

Our customers benefit from the optimum link between the factory and logistics centre at the same location: rapid availability, increased storage space and higher speeds along the entire production, fabrication and service chain. For our RAUKANTEX edgeband made in Germany.

Sustainability in action

In the case of RAUKANTEX, the company's sustainability approach includes using formulations free of harmful substances, producing sustainable edgeband ranges, ensuring maximum recycling and reutilisation of production and processing waste and the use of 100% carbon-neutral electricity for production in all European edgeband plants.

When it comes to CO₂ emissions, REHAU can leave a further footprint. Thanks to our new centre, HGV transports for plant logistics can be significantly reduced, representing savings in CO₂ emissions of around 62.5 tons per year.



We naturally understand edgebands

The two sustainable product ranges, RAUKANTEX eco* and RAUKANTEX evo*, actively promote the reduction of CO₂ emissions and increased use of recycled materials.

RAUKANTEX basic edge* supports resource-saving, lightweight construction. For our RAUKANTEX pro product line, we opt for the more ecologically compatible polypropylene polymer, which is free from adhesives.

*Note minimum purchasing quantities | production goods

RAUKANTEX – Variety is our product range.

The ideal edgeband for every requirement – this means variety in processing and continuous expansion of the range. Why? Because the edgebands need to perfectly match the boards.



To achieve this, our goal is to have suitable edgebands available in our stock collection. That's why the RAUKANTEX edgeband range is extensive. The standard range includes more than 2,000 colours and decorative designs in over 200,000 different edgeband variants for the more than 16,000 surfaces used in the furniture world, and around 300 new designs are added every year.

Edgeband search and sample service

Are you looking for an edgeband to match your board? No problem! With just a few clicks, you can find the perfect edgeband and board match in our online edgeband search tool.

www.rehau.com/collection



If you want to ensure that they match, simply order up to 10 edgeband samples free-of-charge, delivered to your workshop.

www.rehau.com/collection



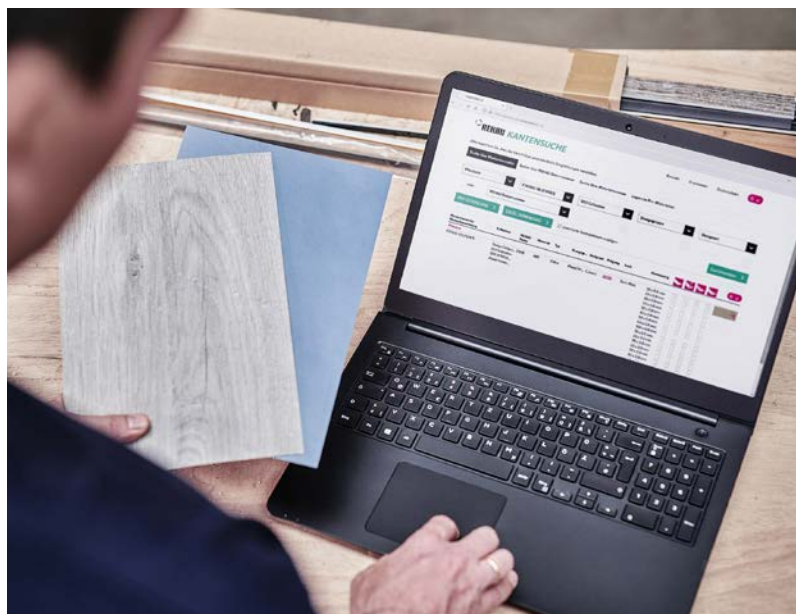
Collaborations

Partnerships are the key to mutual success for REHAU. Many manufacturers, such as Fundermax, Kronospan, Pfleiderer, Polyrey and Sonae Arauco, rely on our reliable cooperation.



Making life easier: services

- **Any quantity, any length:**
RAUKANTEX pure and plus can be ordered from 1 m; RAUKANTEX pro from one coil.
- **Flexible edgeband width cutting:**
Custom widths can be cut from an edgeband coil (70 mm or 104 mm). The smallest possible width is 12 mm. Other widths are generally also supplied unless they are smaller than 12 mm. A 4 mm edge trim is required.
- **Short delivery times:**
orders for stock items received by 4:00 pm are dispatched the same day.
- **Edgeband inner core wrapping.**
- **Single-coil boxes can be selected.**



Design. Creation. Individuality.

One of the strengths of REHAU's edgeband range is certainly the way it matches board surfaces to achieve total seamless integration. Who says edgebands always have to reflect the texture and colour of the surfaces or can the edgeband itself be used as a design feature? Here's a small selection of our fashionable decorative designs. A complete overview can be found at www.rehau.com/collection.

Inspired by nature, refined with individuality.

Bringing nature indoors remains a continued trend – especially in kitchens that open onto the garden. This is precisely where wood decorative designs make a statement.

The original feel and natural look of real wood veneer edgebands impress across the board. It is possible to perfectly interpret the look of a tree trunk cut across the length with wood-grain effect edgebands. The look of a multiplex board is achieved in no time with chipboard and multiplex edgebands. OSB and chipboard edgebands ensure a clean finish of the two fashionable materials.



Matt or high-gloss, it's a philosophy on its own.

Both matt and high-gloss are the current design trends. Matt surfaces impress primarily thanks to their subtle elegance, whereas high-gloss draws more attention to itself.

Whether you choose stainless steel edgebands with a gloss level under 6, high scratch resistance and fingerprint resistance or opt for the prominent mirror-gloss version with a gloss level over 85 and an incomparable surface smoothness, you always make the right choice with RAUKANTEX.

Shine bright – Turn all the lights on!

Light brings rooms to life. When it comes to atmosphere, nothing surpasses the elegance of natural sunlight, but the clever use of light sources on furniture can also create interesting highlights.

RAUKANTEX lumina

When exposed to UV or artificial light, the pigments absorb light, convert it through the edgeband and emit the light into the room.

RAUKANTEX lite

Indirect lighting can create a cosy atmosphere or intentionally make a real eye-catcher using integrated colour LED strips.

RAUKANTEX light up

After being exposed to natural or artificial light, these edgebands glow in the dark for a long time – and entirely without electricity.



Full of character and durability.

Metal has become an integral part of modern interior design. Metallic surfaces are not only visually striking, but also very durable and functional, making them an attractive choice in kitchens and the medical sector, for example.

Classic metal edgebands with laminated real metal foil are perfectly complemented by wood shades, glass or matt surfaces – the design combinations are endless.

Carbon isn't just chic when it comes to vehicles – it goes well with furniture, too. The flip-flop edgeband changes its colour as well as its brightness depending on the viewing angle.

Edgebands with added value

The story of the edgeband is a story of progress. RAUKANTEX has taken great evolutionary strides, and not just in terms of its appearance and ease of processing – the edgeband is now also available with various special functions.



When safety is required: RAUKANTEX FP

Fire protection is the be-all and end-all in building construction, as well as in commercial construction. RAUKANTEX FP from the fire.protect product family provides self-extinguishing edgebands with halogen-free flame retardants for wall linings and furniture which meet crucial European fire protection requirements and, at the same time, do not limit the design. Their fire behaviour is certified according to the applicable standards: EN 13501-1* and EN 45545-2.

*Please see our technical information for composite testing with a specific board and adhesive.
Please note the minimum purchasing quantity / production goods.

For improved hygiene and safety: RAUKANTEX health.protect*



Whether it's at a hospital or your own living area, wherever lots of people meet in a confined space, REHAU health. protect contributes to the prevention of surface contamination. Thanks to specially adapted formulations and coatings, these edgebands unleash their antibacterial and antiviral effect. This means that, even at normal humidity, more than 99.9 percent of bacteria and certain viruses are destroyed within 24 hours. RAUKANTEX pro in particular reveals its full range of benefits here. Thanks to its jointless appearance, it not only looks refined, but also prevents the build-up of dirt in joints. For more information, visit www.rehau.com/health-protect

*Please note minimum purchasing quantities/production goods.

#edgeisdigital

When it comes to edging boards, these days you need a lot of time for stock keeping, administration and adjusting machines. There is no up-to-date information on stock levels, consumption or remaining quantities. The master data has to be transferred to the machine from the label; this is an error source costing time as well as money.

But there is an easier way: with the REHAU service for digitalising the edgeband. The #edgeisdigital principle is ingeniously simple. Using the information on the inner core of the edgeband coil, the data can be made available "on tag", via a cloud or via a direct IT interface.

For you, this means automation and optimisation throughout the storage and production process – in short: a smart factory!





Perfection down to the smallest detail: RAUKANTEX for furniture for total seamless integration.

The ideal edgeband for every requirement – this is REHAU's promise to our customers. Edgebands have to do more than just visually impress. The right processing method plays a decisive role as well.

RAUKANTEX product family

High quality for traditional adhesive-based processing with RAUKANTEX pure or top invisible joint quality, 100% adhesive-free, with RAUKANTEX plus and pro. RAUKANTEX pro remains the market standard for perfect, durable invisible joints thanks to its tried-and-tested quality.

Pure, plus & pro: the trio of edgebands in the RAUKANTEX product family



Three technologies for invisible joints:

Laser technology

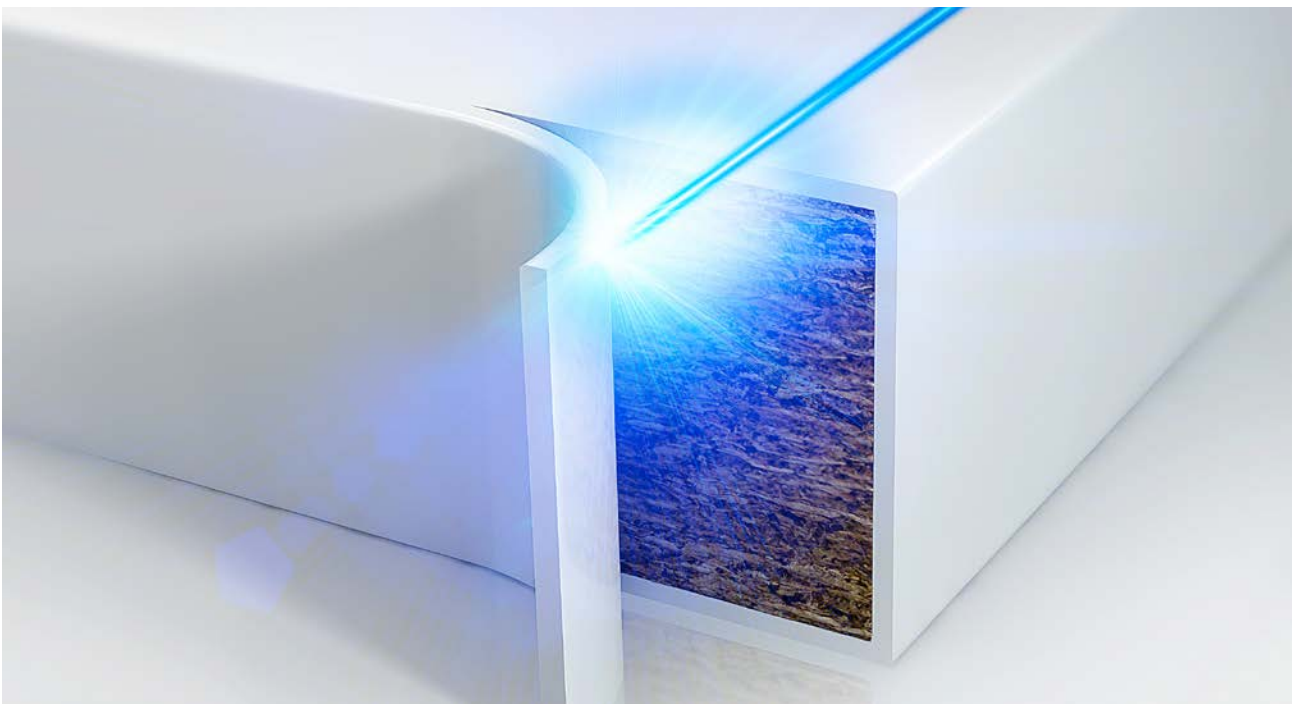
In laser processing, a laser activates the edgeband's functional layer.

Hot air technology

With this process, compressed hot air is used to melt the functional layer.

Near-infra-red technology

Thermal energy can be transmitted rapidly and with pin-point accuracy using NIR technology.



The perfectionist: RAUKANTEX pro

Edgeband with polymer functional layer

Get perfect, seamless components with the 100% polymer functional layer. 100% colour match. 100% adhesive-free.

- ■ ■ Moisture resistance
- ■ ■ UV resistance
- ■ ■ Adhesion/hardness
- ■ ■ Appearance

The entry-level edgeband: RAUKANTEX plus

Edgeband with TPU functional layer

A polymer-based, colour-matched functional layer on the reverse side lends the components a seamless appearance. 100% adhesive-free. New generation on TPU basis.

- ■ □ Moisture resistance
- ■ □ UV resistance
- ■ □ Adhesion/hardness
- ■ □ Appearance

Der Klassiker: RAUKANTEX pure

Primer edgeband

Adhesive is melted before it is applied to the board or edgeband.

Example EVA-Kleber:

- □ □ Moisture resistance
- □ □ UV resistance
- ■ □ Adhesion/hardness
- □ □ Appearance

Example: PUR:

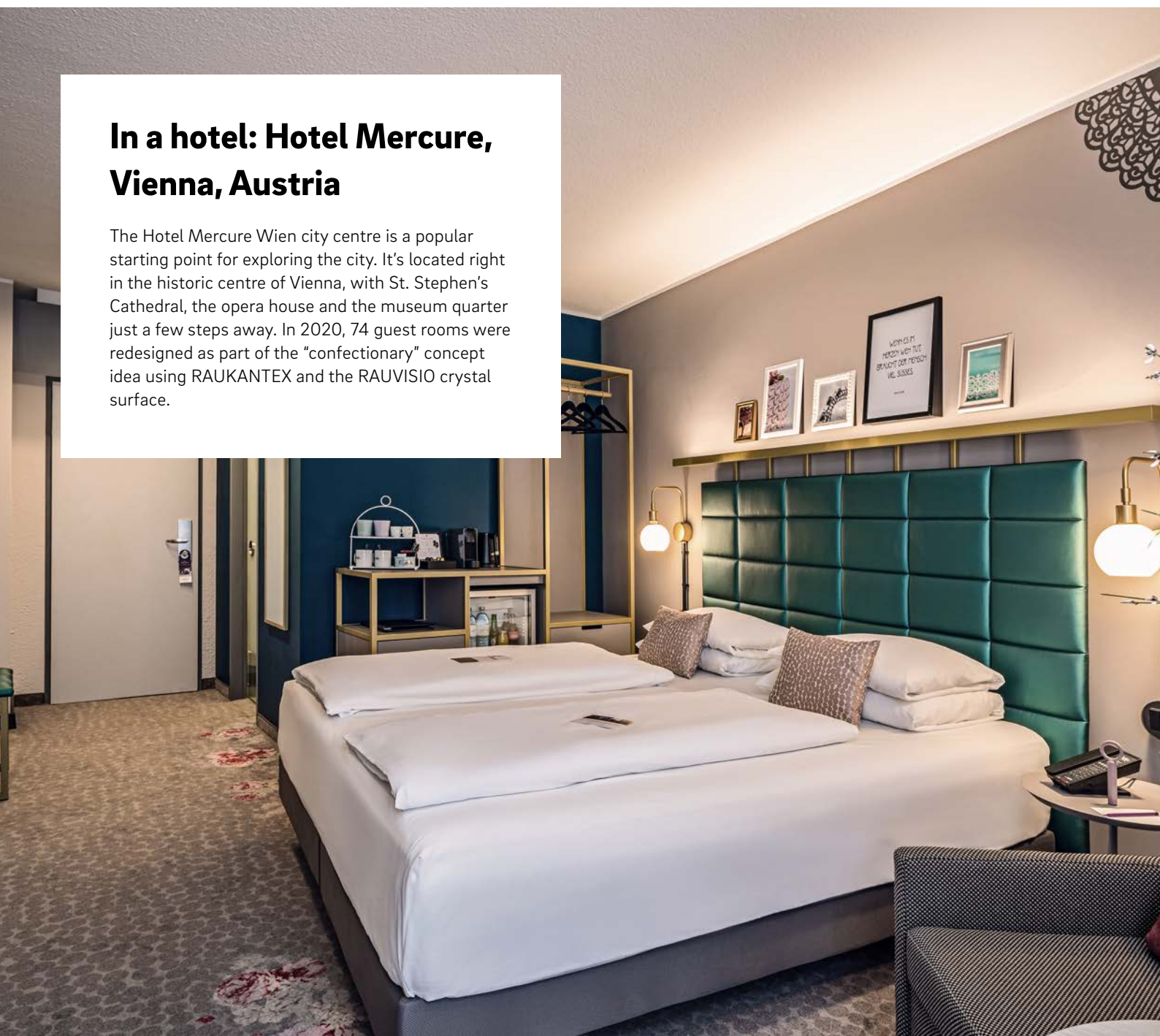
- ■ ■ Moisture resistance
- □ □ UV resistance
- ■ ■ Adhesion/hardness
- □ □ Appearance

Areas of application: Wherever there are people, RAUKANTEX also is there.

Kitchen, bathroom, living area – RAUKANTEX is at home wherever people settle. However, the success story goes far beyond living spaces. This is demonstrated by numerous projects in which RAUKANTEX has been used during its 50-year history. Whether at sea or in a children's hospital – we would like to present some special areas of application for RAUKANTEX.

In a hotel: Hotel Mercure, Vienna, Austria

The Hotel Mercure Wien city centre is a popular starting point for exploring the city. It's located right in the historic centre of Vienna, with St. Stephen's Cathedral, the opera house and the museum quarter just a few steps away. In 2020, 74 guest rooms were redesigned as part of the "confectionary" concept idea using RAUKANTEX and the RAUVISIO crystal surface.



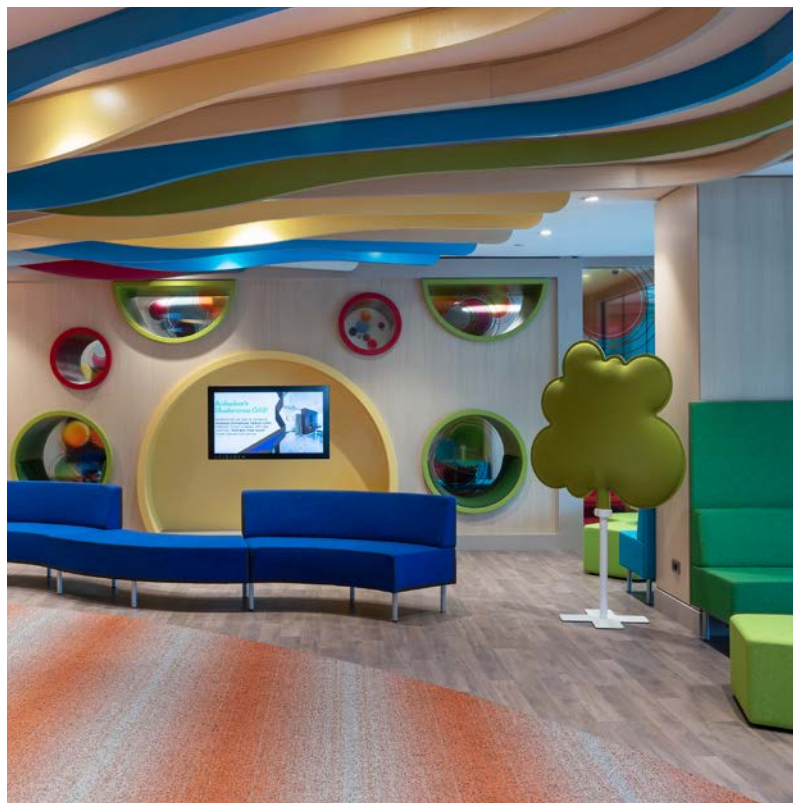


At the Olympics: the Olympic Village in Beijing

‘One World - One Dream’ was the motto of the 2008 Olympic Games in Beijing – and RAUKANTEX was also involved in making dreams come true in China. In collaboration with the Hong Kong Royal Furniture Limited group of companies, REHAU exclusively supplied 1.5 million metres of edgeband for around 100,000 beautiful furniture sets used to equip the 15,000 houses at the Olympic village.

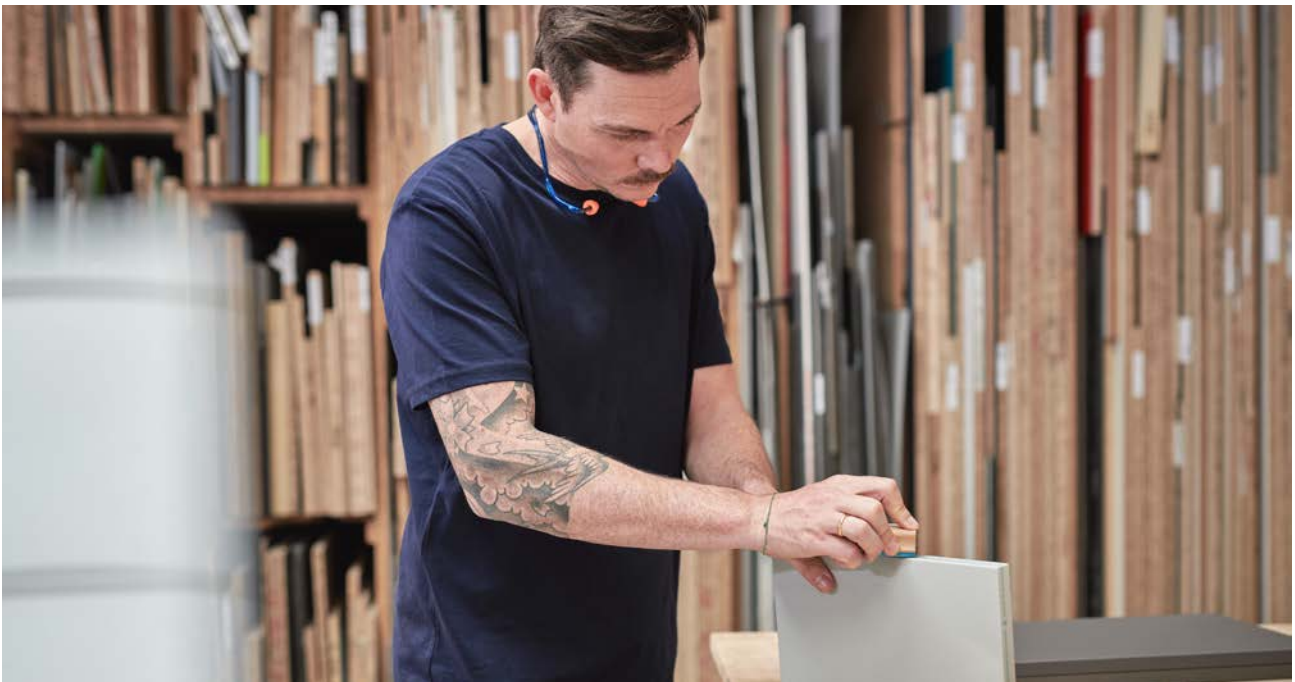
For good health: Acibadem Maslak children’s hospital in Istanbul

The lobby of the children’s hospital in Istanbul looks far from being a sterile environment. Thanks to Finnish furniture manufacturer ISKU Interior, the interior is colourful, playful and inviting. Functionally, of course, everything revolves around hygiene and protection. The concept behind ISKU+ is that everything is geared towards making materials antimicrobial: furniture surfaces, textiles, artwork, paints and laminates all feature antimicrobial technology. This is why antibacterial laser edgebands from REHAU – i.e. RAUKANTEX health.protect – are also used in ISKU+ furniture.



RAUKANTEX tools

RAUKANTEX tools give you innovative solutions for processing edgeband manually.



Sanding & polishing

Removing protective foil



RAUKANTEX finisher
Mat.no. 12300791001

Due to its special sisal/textile combination, the RAUKANTEX finisher is suitable for smoothing edgebands and removing tooling marks.



RAUKANTEX flap wheel
Mat. no. 12780461001

The RAUKANTEX flap wheel can be used wherever sharp edgebands have to be smoothed or rounded off. The flap wheel can be attached to and powered by any standard drill.



RAUKANTEX Foliex and RAUKANTEX Foliex mini
Mat. no. 12135621001 and
mat. no. 13201351001

Removes protective foil faster and more accurately using the RAUKANTEX Foliex.

The powerful duo for your furniture components: RAUKANTEX & RAUBOND.

The best adhesion promoter edgeband also needs the best adhesive.

It isn't easy to find the right combination among the variety of edgeband materials and adhesives. Discover our new hot-melt adhesives for perfect processing of furniture components.



The advantages of RAUBOND hot-melt adhesive

- Recommended for all REHAU adhesion promoter edgebands
- Can be processed easily with every melt adhesive machine
- Strong adhesion
- Everything from a single source: Hot-melt adhesives can easily be supplied with ordered edgebands
- Available in a 25 kg bag
- Colours: White and beige



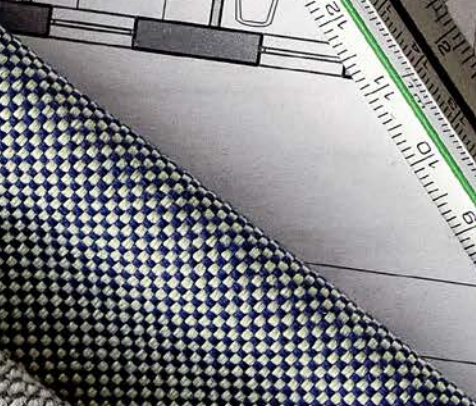
Product line overview

Product range	Program line	Description
Basic	Solid	The RAUKANTEX colour product line is available in an almost unlimited range of colours. The edgeband is perfected by means of material embossing or paint finish effects.
Basic	Decorative designs (wood-grain, multiplex, OSB and chipboard edgebands)	Variety of wood- and stone-look decorative designs. The edgebands have been refined over time to perfectly interpret stone and wood.
Premium	Mirror gloss	Glossy, mirror surfaces are still fashionable in interior design. The mirror-gloss surface with a gloss level of over 85 gloss level points demonstrates unrivalled surface smoothness and a uniform appearance.
Premium	Noble matt	Noble matt represents a whole new generation of surfaces. With a gloss level of under six points, it demonstrates a particularly high resistance to scratches and fingerprints.
Premium	Real wood veneer**	Real-wood veneer edgebands are the best match for real-wood boards. They captivate thanks both to their feel and their natural look.
Premium	Feature edgebands	The RAUKANTEX inspiration range puts edgebands at centre stage, as key design elements in their own right. Striking designs make this edgeband an eye-catcher.
Premium	magic 3D (carbon, flip-flop)	A transparent substrate combines with the decorative design on the back to lend the RAUKANTEX magic 3D edgeband a unique three-dimensional effect. Originality and the illusion of depth combined to create a striking decorative design.
Premium	Real glass effect (lumina and light up)	With the RAUKANTEX visions V-groove, REHAU have combined the unique look of real glass with the practical advantages of polymer-based materials. The metal and glass composite has the effect of a glass pane lying on a metallic base. The RAUKANTEX visions duo design edgeband range provides a seamless look from the front, giving the impression that a glass pane has been mounted flush on top of the edgeband.
Premium	Translucent edgebands***	This backlit edgeband is a highlight of a piece of furniture. With the LEDs mounted on the back, the light shines through the translucent areas of the edgeband.
Premium	Metallic effect	From cool aluminium to high-end stainless steel, design's love affair with metal isn't vanishing any time soon. This premium edgeband is not just for kitchens – it can also be used for offices, home offices, shop fittings and in living environments.



Custom widths can be cut from an edge- band coil (70 mm or 104 mm). The smallest available width is 12 mm. Other widths are generally also available unless they are smaller than 12 mm. A 4 mm edge trim is required.

Pure, Plus Pro	Material	Available standard dimensions		
Pure, Plus, Pro	ABS	22 x 0.4 mm 19 x 0.8/2.0 mm 23 x 0.8/2.0 mm 28 x 0.8/2.0 mm	33 x 0.8/2.0 mm 35 x 0.8/2.0 mm 43 x 0.8/2.0 mm 54 x 0.8 /2.0 mm	64 x 0.8/2.0 mm 70* x 0.8/2.0 mm 104* x 0.8/2.0 mm
Pure, Plus, Pro	ABS	22 x 0.4 mm 19 x 0.8/2.0 mm 23 x 0.8/2.0 mm 28 x 0.8/2.0 mm	33 x 0.8/2.0 mm 35 x 0.8/2.0 mm 43 x 0.8/2.0 mm 54 x 0.8 /2.0 mm	64 x 0.8/2.0 mm 70* x 0.8/2.0 mm 104* x 0.8/2.0 mm
Pure, Plus, Pro	ABS	19 x 1.0 mm 23 x 1.0 mm 28 x 1.0 mm 33 x 1.0 mm	35 x 1.0 mm 43 x 1.0 mm l 54 x 1.0 mm 64 x 1.0 mm l	70* x 1.0 mm
Pure, Plus, Pro	ABS	19 x 1.0 mm 23 x 1.0 mm 28 x 1.0 mm 33 x 1.0 mm	35 x 1.0 mm 43 x 1.0 mm 54 x 1.0 mm 64 x 1.0 mm	70* x 1.0 mm 104* x 1.0 mm
Pure, Plus	Wood	24 x 1.0/2.0 mm 26 x 1.0 mm 28 x 1.0/2.0 mm 34 x 1.0/2.0 mm	45 x 1.0/2.0 mm 55 x 2.0 mm	
Pure, Plus	PP	43 x 1.5 mm 54 x 1.5 mm		
Pure, Plus, Pro	PMMA	23 x 1 mm 43 x 1 mm		
Pure, Plus, Pro	PMMA	23 x 1.3/1.5 43 x 1.3 mm		
Pure	PMMA	45 x 2.0 mm 54 x 2.0 mm		
Pure, Plus, Pro	ABS	19 x 1,0 mm 23 x 1.0 mm 28 x 1.0 mm 33 x 1.0 mm	43 x 1.0 mm 54 x 1.0 mm 64 x 1.0 mm 104 x 1.0 mm	



287
203
12.5
12.5
12.5



Do you have any questions about our products and services?

We would be pleased to assist you:

For Germany: +49 (0)800 73 42 888

For Austria: +43 (0)7 32 38 16 10-138

For Switzerland: +41 (0)44 839 79 39

Or via email: innenausbau@rehau.com

www.rehau.com/interior

This document is protected by copyright. All rights based on this are reserved. No part of this publication may be translated, reproduced or transmitted in any form or by any similar means, electronic or mechanical, photocopying, recording or otherwise, or stored in a data retrieval system.

Our verbal and written advice with regard to usage is based on years of experience and standardised assumptions and is provided to the best of our knowledge. The intended use of REHAU products is described comprehensively in the technical product information. The latest version can be viewed at www.rehau.com/TI. We have no control over the application,

use or processing of the products. Responsibility for these activities therefore remains entirely with the respective user/processor. Where claims for liability nonetheless arise, they shall be governed exclusively according to our terms and conditions, available at www.rehau.com/conditions, insofar as nothing else has been agreed upon with REHAU in writing. This shall also apply for all warranty claims, with the warranty applying to the consistent quality of our products in accordance with our specifications. Subject to technical changes.

www.rehau.com/locations

© REHAU Industries SE & Co. KG
Helmut-Wagner-Straße 1
95111 Rehau
Germany

M01709 EN 08.2023